

**NSR**  
PROFESSIONAL SLOT CARS

24H WORLD RACE ENDURANCE

**2025**

TECHNICAL RULES



# WRE 2025 TECHINCAL RULES

(Version 1.1 2025)

## 1. Allowed models

- 1.1 **Ford MK IV** all versions  
**Porsche 917K** all versions  
**P68 Alan Mann**  
**Ford GT40 MK II** all versions  
**Porsche 908/3** all versions  
**Porsche 917/10K** all versions  
**Lola T280/290** all versions



## 2. Body

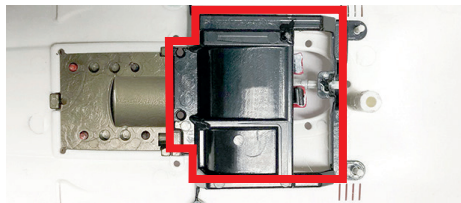
- 2.1 It must be original in all its parts and can not be modified, only exception for point 3
- 2.2 If the white kit is used, the body must be completely repainted, leaving the transparent crystals.  
Fluorescent colors are not allowed.
- 2.3 There must be 2 race numbers on the body.
- 2.4 It is allowed to remove the spare wheel and the toolbox in the models that have them in the cockpit (Ford)
- 2.5 All components must be fixed in original position (no floating components allowed)
- 2.6 At the beginning the body must be complete in all its parts
- 2.7 At the end of the race, they may not be present the rear view mirrors.
- 2.8 CAN NOT be lightened or modified compared to the original
- 2.9 **MINIMUM WEIGHT:**

<b>Lola T280/290</b>	<b>22.0 g</b>
<b>Porsche 917/10K</b>	<b>19.5 g</b>
<b>Porsche 908/3</b>	<b>22.0 g</b>
<b>Ford MK IV</b>	<b>19.0 g</b>
<b>Porsche 917K</b>	<b>19.0 g</b>
<b>P68 Alan Mann</b>	<b>20.0 g</b>
<b>Ford GT40 *</b>	<b>18.0 g</b>

\* Lexan cockpit ref. NSR1409



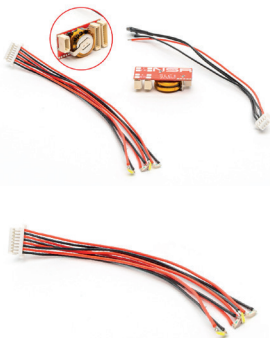
- 2.10 In case of ballasting the body the weight should be placed under the cockpit (NOT BEHIND the motor).



- 2.11 In case of loosing the ballast or the rear wing they must be replaced in maximum 5 laps or you will get a penalty of 20 laps for each segment raced without them.

### 3. Light kit

- 3.1 The only permitted light kit is NSR cod. 3100 "professional light kit ready to race with 4 leds"
- 3.2 maximum of 4 LEDs at the front and 4 at the rear with the use of the "additional 4 LEDs for nsr light kit" cod. 3101.
- 3.3 It is allowed to make holes in the body (in the headlights area) to fit the leds. It is allowed to put the led instead of the lower small headlight on the P68 and GT40.
- 3.4 The light kit's chip must be placed on the body. Light switch can be placed on the mechanic of the car.
- 3.5 Each team will be called from race direction to turn on the lights.
- 3.6 At the start of the race, the lights must be turned off and they will be turned on at the beginning of the night phase. During all the night phase, at least 3 of the 4 lights must be turned on.
- 3.7 At the end of the night phase, lights can be on or off.
- 3.8 In case of light kit damaging (during the night phase), it must be repaired or changed during the race time, in max. 10 laps after the problem. Otherwise, the team will get a penalty of 20 laps, plus 5 laps for each manche done with damaged lights kit.



### 4. Chassis

- 4.1 Only black original chassis is allowed for each model:

<b>Ford MK IV</b>	1322-1428 EVO medium black
<b>Porsche 917K</b>	1339-1425 EVO medium black
<b>P68 Alan Mann</b>	1351-1431 EVO medium black
<b>Ford GT40 MK II</b>	1369-1434 EVO medium black
<b>Porsche 908/3</b>	1601 medium black
<b>Porsche 917/10K</b>	1613 medium black
<b>Lola T280/290</b>	1629 medium black

- 4.2 It is mandatory to write the name of the team on the chassis



### 5. Motor support

- 5.1 The allowed motor support are: stock red extrahard 1270 and medium black 1272



1270 EVO



1272

- 5.2 To fix the motor support to the chassis, the only cups allowed are the original (of any colour) ref. 1205

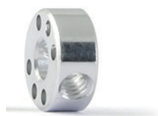
### 6. Axle and bushings

- 6.1 Original axles ref. 4801
- 6.2 Spacers are allowed on both the front and rear axles.
- 6.3 Original bushing ref 4805.





- 6.4 NSR stopper 4860 are allowed on the rear axle.



## 7. Motor

- 7.1 Only Shark EVO short box 21,500 rpm, (purple label ref 3041) provided by the organization with already lubricated 11-tooth brass pinion SW (ref. 6911A).
- 7.2 It must be attached to the motor support with both two NSR 4856 screws.



## 8. Transimssion

- 8.1 All Sidewinder metal crowns are allowed from NSR 17.5mm diameter, both plastic or metallic gears.

metallic 6030, 6031, 6032, 6033, 6034, 6035, 6036, 6037



plastic 6430, 6431, 6432, 6433, 6434  
Also in the EVO version



## 9. Wheels

- 9.1 Standard front wheels code 5001 fixed to the axle by screw.

5001



- 9.2 Original rear wheels 5002 (air system) or 5001 (no air system) fixed to the axle by screw.



- 9.3 Wheel hubcaps are required (5433 for Ford MKIV, 5434 for the Porsche 917, 908/3 and Lola T280/290, 5435 for the Alan Mann P68), 5436 for the Ford GT40 MKII.

They can be glued on the rims.



- 9.4 In case of loosening the wheel inserts they must be replaced in maximum 5 laps or you will get a penalty of 20 laps for each segment raced without them.

## 10. Front tires

- 10.1 NSR recognizable front tires (5200 16x8, 5201 17x8, 5226 18x8).
- 10.2 It is allowed to glue and true the tyres on the rims.
- 10.3 They must completely cover the tire.
- 10.4 CAN NOT be covered with material or additives that modify its adhesion to the floor (glue, paint and the like, for example).

## 11. Rear tires

- 11.1 New Racing low profile rear tires ready to run, provided by the organization (code 5271WRE). Available from February 2025)
- 11.2 Each team will have 5 pairs of rear tires for all the race.



## 12. Guide

12.1 All NSR guides are allowed: 4841 - 4842 - 4843 - 4844 - 4845-4859.



12.2 NSR spacers are allowed between the chassis and the pickup to better adjust the attitude at the bottom of some types of tracks.

Pick-up guide spacer brass



12.3 It is allowed to thin the blade.

## 13. Cables

- 13.1 Original NSR ref 4824. Can be modified to power the light kit.
- 13.2 Although they can pass under it, they can not interfere with the front axle, which will have to turn freely.
- 13.3 Can be attached to the chassis with adhesive tape or glue.

## 14. Braids

- 14.1 NSR 4822 (Copper braids) – 4849 (Tin plated braids), fixed to the guide as original position with original eyelets ref 4821.
- 14.2 They can not be glued to the guide or to the cables.

## 15. Screws

- 15.1 NSR 4836 - 4837 - 4839 - 4869 metric screws allowed in body and motor support.
- 15.2 It is allowed to leave them loose to facilitate the tilting of the body.
- 15.3 Allow screws EASY SET UP NSR 4834 for the body.



## 16. Magnets

- 16.1 Forbidden

## 17. General measures

- 17.1 Maximum front and rear width of 61mm.

## 18. Power on tracks

- 18.1 The voltage on track will be between 12.0 and 12.5 V.



**Everything not specified is NOT ALLOWED!**

## LIST OF THE ALLOWED SPARE PARTS:

Description	Quantity
The motor with the 11 tooth 6.5 mm.dia pinion	Provided by the organization
Z 11 Pinions	3
Gears	4
Chassis	1 (for each car model inscripted)
Motor mount with bearings	2
Axles	2
Fronts wheels	1 pr.
Rear tires	Provided by the organization
front/rear rims	5 pairs
Wheels hubcup	4 (for each model inscripted)
Guides	3
Guide spasers	free
Brades & connectors	free
Electrical wires	free
Light set	1
Bodyshell & motor mount screws& taps	free

**The finaly technical check will be made with the technical NSR 4110 OFFSET MARSHALL tools to verify the offset of both rear axle and motor.**

